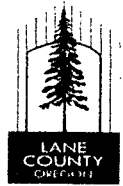


T.G.B

Memo Date: July 10, 2008
Work Session Date: August 5, 2008



TO: Board of County Commissioners

DEPARTMENT: Public Works Department/Land Management Division

PRESENTED BY: Kent Howe, Planning Director and Keir Miller, Associate Planner

AGENDA ITEM TITLE: Board Direction Concerning the Land Management Division - Land Long-Range Planning Work Program during the 2008-2009 Fiscal Year.

I. MOTION

I move that the LMD Long-Range Planning Program be directed to undertake or continue the following activities during the 2008-2009 Fiscal Year __, __. (List in order of priority from the projects listed in Attachment "B")

Or;

I move that the LMD Long-Range Planning Program be directed to undertake or continue the activities outlined under Scenario __. (Identify scenario from the four listed in Attachment "D")

II. AGENDA ITEM SUMMARY

The Long-Range Planning Program is responsible for the maintenance of the Lane County Rural Comprehensive Plan (RCP) and the formulation and amendment of land use regulations to implement the RCP. In addition to these responsibilities, the long-range planning staff complete projects at the direction of the Board of Commissioners and collaborate with other local, State, and Federal agencies and organizations to help guide Lane County toward a balanced and sustainable future consistent with Oregon's Statewide Planning Goals.

Twenty four long-range planning projects have been identified for possible action during the 2008-2009 Fiscal Year. Undertaking all identified projects would require approximately 5.5-6.0 FTE. Currently, only 2.4 FTE are available to conduct long-range activities. The Board is being asked to provide Land Management direction regarding the prioritization of these projects.

III. BACKGROUND/IMPLICATIONS OF ACTION

A. Board Action and Other History

Each year the Board prioritizes the work plan of the Long-Range Planning Program. In recent years, staff have been directed to undertake a broad spectrum of projects. These have included numerous plan amendments and associated activities to address periodic review, Metro and small city planning coordination, private airport planning,

application for enrollment in FEMA's Community Rating System, development of a zoning and planning geographic information system, natural hazards mitigation work and several code updates pursuant to State law. In addition to these projects, the long range staff have provided periodic support and coverage to the current planning (permit processing) program.

From 2003 to 2007, LMD employed four long range planners. These positions were funded from a combination of sources including grants from the Department of Land Conservation and Development, long-range planning surcharges assessed to planning actions and building permits, Title III funding (for qualifying projects) and economic development (video lottery) dollars.

In April 2007, the Economic Development Standing Committee elected not to award the Land Management Division's request for the renewal of a Video Lottery General Allocation Grant to support long-range activities in 2007-2008 Fiscal Year. The loss of vid-lot funding required LMD to eliminate two long-range planning positions. There are presently only two long range planners on staff which, are overseen by the Planning Director. Attachment "A" to this memo is a current organizational chart of the LMD – Planning Program.

On April 30, 2008, LMD presented the Board twenty long-range planning projects for potential action during the 2008-2009 FY. Staff asked the Board to rank the projects in order of priority (1-20, with 1 being the most important and 20 being the least important). The Board instructed staff to email each commissioner a priority matrix, which was to be filled out individually and returned to staff. The Board also directed staff to schedule a future work session to discuss the results once they were available.

On May 14, 2008, LMD received direction from the Board to add the following two additional items to the long-range planning work plan project list:

1. Review of the appeals process and fees
2. Streamlining permitting for solar and other alternative energy sources

The project matrix was revised to include these additional items and a new electronic matrix was circulated to the Board. Staff received responses form Commissioners Stewart, Green and Fleenor.

On July 9, 2008, the Board directed LMD to develop a scope of work detailing the tasks required to terminate the Metro Plan Urban Transition Agreement and make associated policy amendments to the Metro Plan. If undertaken, these additional items would likely need to be carried out by long-range staff. For this reason they have been added to the project list included to this memo. These items have not been individually prioritized by the Board.

B. Policy Issues

An unprecedented number of large and complex planning projects have been identified for possible action in the coming year. A subset of these projects would address issues that have recently become highly politicized, i.e., population forecasting and Urban Transition Agreement termination. Other projects and activities would address lesser known but significant issues.

Approximately 5.5 - 6.0 FTE would be required to carry out all identified projects. Only 2.4 FTE are currently available to work on these projects. This includes two full time planners and a portion of the Planning Director's time. The Board will need to determine which projects should be given priority and which of the proposed projects will need to be shifted to the next fiscal year or eliminated.

C. Board Goals

Many of the Long-range projects identified for possible implementation align with one or more of the following Board Goals: 1.3 Promoting electronic access to public services, 2.2 Information technology, and 3.3 strengthening analytical capabilities.

D. Financial and/or Resource Considerations

Revenues for the Long-Range Planning Program in the 2008-2009 FY are projected at \$325,000.00. This figure is based on a 15% long-range surcharge that is assessed to all planning actions and certain building permits requiring land use review. This projection is an estimate only and assumes a substantial (20-25%) forecasted reduction in permit activity. This anticipated reduction is predicated on recent downturns in the local construction and land development industries.

As discussed above, 2.4 FTE are available to work on long-range activities. Funding for these FTE would be fully covered by the \$323,500.00 in expected revenues. If the Board chooses to assign a work plan that is consistent with LMD's staffing/ financial constraints, then current projected revenues will suffice. If the Board would like staff to pursue a more complete work plan, then additional resources will be required.

In addition to funding generated through the surcharge, the Long-Range Planning Program has sought funding from other sources where available and appropriate.

On July 7, LMD submitted a Technical Assistance Grant application to the Department of Land Conservation and Development (DLCD) requesting \$74,000.00 to help offset costs associated with the development of coordinate countywide population forecasts. DLCD is currently reviewing the grant application.

At the direction of Commissioner Sorenson, staff also contacted Northwest Natural Gas and the Eugene Water and Electric Board to ascertain what level of interest local utilities may have in financially supporting population forecast work. As of the date of this memo, EWEB and Northwest Natural Gas have not yet responded.

LMD has also been involved in discussions with the Parks and the Transportation Planning / Traffic Divisions concerning the Parks and Open Space Master Plan Update (described on page 5 of Attachment "C"). The Transportation Planning Division has been assisting Parks with the Plan Update and they have recently inquired about the possibility of LMD providing additional assistance on project. Up to \$30,000 is available from the Parks Division for this assistance.

Finally, the Eugene Water and Electric Board has pledged to dedicate up to \$10,000 in funding to reimburse the County for staff time associated with the proposed drinking water source protection planning activities described on pages 1 and 2 of Attachment "C".

E. Analysis

The twenty four long-range projects identified for possible action during the 2008-2009 Fiscal Year are listed on the matrix included as "Attachment B". The matrix lists the anticipated FTE required to carry each project and also identifies the relative priority recommendation that staff have assigned to each project. The staff priority recommendations are based on several factors including: the availability of potential grant funding, continuity with other ongoing projects, state mandates and input from other agencies and the general public. More detailed descriptions of each of the projects listed on the matrix can be found in "Attachment C".

Twenty-two of the potential have been individually ranked by Commissioners Stewart, Green and Fleenor. Each of their respective rankings have been tabulated and are included on the matrix. Staff calculated the sum of the response results as well as the mean, median and mode response for each project. Using this data a group-based ranking was developed. The group-based ranking relies on the sum response results to establish an order for the twenty-two projects. In situations where the sum response resulted in a tie between two projects the mode response was used. Where a mode response was not available other factors such as the FTE requirement and staff priority recommendation were used to break the tie.

The Board may direct staff to undertake projects as prioritized by Commissioners Stewart, Green and Fleenor or they may reprioritize the work plan further. Additionally, four possible resource allocation scenarios have been developed by staff and are provided in Attachment "D".

Each scenario would consume approximately 2.4 FTE. The Board may direct staff to undertake the projects identified in one of these scenarios or they may use any of the scenarios as a starting place to develop a more refined work plan from.

Scenario 1: would direct staff to pursue the top ranked projects as prioritized by Commissioners Stewart, Green and Fleenor. This scenario would have staff working on twelve separate projects and would include .5 FTE dedicated to population projection work. This .5 FTE would be sufficient to carry out a robust population effort involving Portland State University as outlined under "Option 3" of the LMD Manager's June 18, 2008, memo to the BCC.

Scenario 2: would direct staff to pursue the seven top ranked projects as prioritized by Commissioners Stewart, Green and Fleenor. This scenario would dedicate 1.0 FTE towards population projection work. 1.0 FTE would enough to create a separate special purpose plan dealing with population as outlined under "Option 4" of the LMD Manager's June 18, 2008, memo to the BCC.

Scenario 3: would direct staff to terminate the Metro Plan Urban Transition Agreement and make associated policy amendments to the Metro Plan. It appears that staff resources would be completely consumed by these activities. Therefore, no other projects (including population projection forecasts) would be addressed under this scenario.

Scenario 4: would direct staff to work primarily on the population projection project (option 3) and to undertake work associated with, and resulting from, the termination of the Metro Plan Urban Transition Agreement. Under this Scenario approximately .45 of an FTE would also be available to work on one or two other top ranked projects.

F. Alternatives/Options

The Board may choose to:

1. Direct staff to pursue a work plan as specified under one of the scenarios listed in Attachment "D";
2. Direct staff to undertake an alternate work plan;
3. Refrain from acting and direct staff to provide additional information

G. Recommendation

Staff recommends that the Board choose Option 1, directing staff to follow the work plan as specified under Scenario "1".

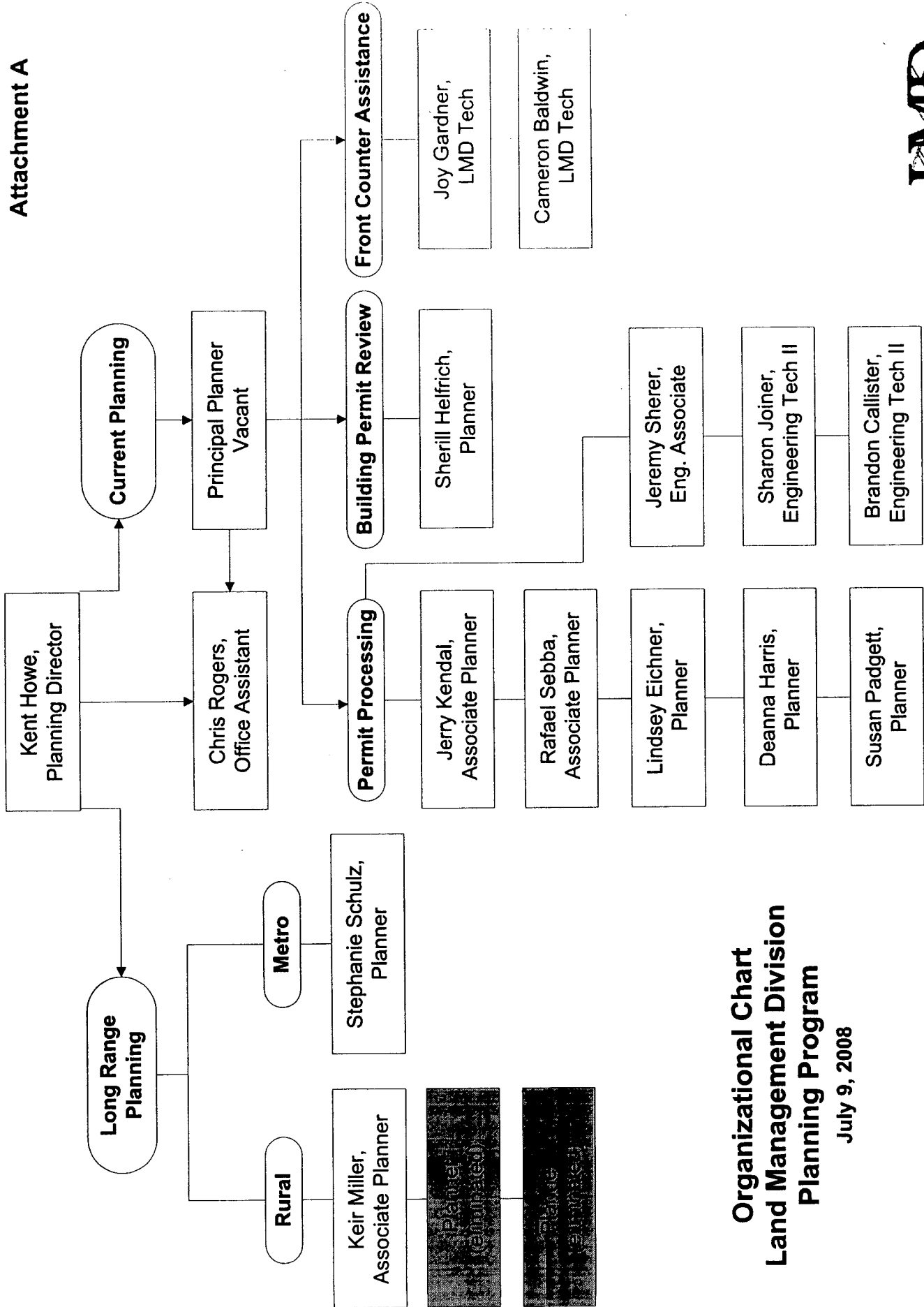
IV. TIMING/IMPLEMENTATION

The chosen alternative including priorities will be implemented at the direction of the Board.

V. ATTACHMENTS

- A. LMD Planning Program Organizational Chart
- B. Potential Projects Matrix for the 2008-2009 Fiscal Year
- C. Proposed Projects Descriptions
- D. Resource Allocation Scenarios

Attachment A



**Organizational Chart
Land Management Division
Planning Program**

July 9, 2008



Attachment "B" Potential Projects Matrix

Project Name	Required FTE	Staff Priority Ranking	Comm. Fleeonor
L. Eugene Springfield Metro Plan	0.30	High	2
N. Special District Boundary Changes	0.15	High	3
O. Small City Coordination	0.35	High	4
P. Lane Code Updates from 2008 Land Use Legislation	0.15	High	5
Q. Coordinated Population Projections (Option 3= .5 FTE, Option 4 =1.0 FTE)	0.5 or 1.0	High	1
A. Drinking Water Source Protection Planning	0.10	High	7
D. Parks Master Plan Adoption	0.25	High	10
C. e-Government Services Maintenance (GIS & internet)	0.20	High	8
U. Review of the Appeals process and fees	0.05	High	6
G. Community Rating System - Annual Coordination and Recertification	0.15	High	13
H. County Flood Mitigation Plan Phase 1	0.30	High	11
V. Streamlining permitting for solar and other alternative energy sources	0.10	High	22
S. Concurrent processing of building permits & final land use decisions	0.05	Low	14
M. Regional Water Resources Planning	0.25	Medium	15
J. OWEB Grant Projects - Land Use Compatibility Review	0.05	High	12
T. Measure 49 Referrals	0.20	High	9
B. Dredged Material Disposal Plan Update - Phase II	0.40	Low	16
R. Policy review of HO Decision regarding replacement dwellings	0.05	Medium	17
F. Revised Riparian Protection Provisions	0.15	Low	18
E. ODFW Coordination Wildlife Habitat Conservation Management Program	0.05	Medium	20
I. Adoption of Dexter Public Facilities Plan	0.15	Low	21
K. Grant Writing & Coordination - Community Wildfire Protection Plan	0.05	Medium	19
W. Metro Plan Urban Transition Termination	1.50	Medium	-
X. Metro Plan Fundamental Policy Amendments	1.00	Medium	-

* Indicates projects where the sum responses resulted in a tie. In these instances the mode value was considered. If no mo

Commissioners' Responses							Group-Based Ranking
m. for	Comm. Green	Comm. Stewart	Sum: Response Results	Mean	Median	Mode	
	1	3	6	2.00	2	N/A	1
	2	4	9	3.00	3	N/A	2
	5	2	11	3.67	4	N/A	3
	3	5	13	4.33	5	5	4
	14	1	16	5.33	1	1	5
	6	6	19	6.33	6	6	6
	7	7	24	8.00	7	7	7*
	8	8	24	8.00	8	8	8*
	4	18	28	9.33	6	N/A	9
	12	12	37	12.33	12	12	10*
	17	9	37	12.33	11	N/A	11*
	9	10	41	13.67	10	N/A	12*
	10	17	41	13.67	14	N/A	13*
	11	15	41	13.67	15	15	14*
	20	11	43	14.33	12	N/A	15
	22	13	44	14.67	13	N/A	16
	15	14	45	15.00	15	N/A	17
	13	16	46	15.33	16	N/A	18
	18	19	55	18.33	18	18	19
	16	22	58	19.33	20	N/A	20
	19	20	60	20.00	20	N/A	21
	21	21	61	20.33	21	21	22
	-	-	-	-	-	-	-
	-	-	-	-	-	-	-

mode was applicable then the staff priority ranking was considered

Proposed Project Title:

A. Drinking Water Source Protection Planning

Project Description and Need:

Safe drinking water is vital to the economic health and livability of Lane County communities. Public water systems in Lane County do an excellent job of treating water and distributing it safely to residents; however, effective water quality management requires more than just treatment. Source water protection is essential, and it can reap huge benefits to communities, including: proactive pollution prevention and decreased chances of losing drinking water sources to contamination; less expensive treatment of raw water; and greater financial security (the Environmental Protection Agency estimates that it is, on average, 27 times more expensive to deal with a drinking water contamination problem than to implement strategies for protection).

On October 29, 2007, representatives from 16 Lane County public water systems* met to develop ways in which Lane County could partner with the water systems to improve source water protection. The public water systems participating in the meeting collectively represented 252,033 water consumers, or approximately 75% of the Lane County population and 90% of the population served by all community public water systems in Lane County. The goal of the meeting was to identify shared source water quality concerns and generate a list of solutions that would be applicable throughout Lane County. Examples of the shared drinking water threats include:

- Storage and use of chemicals/hazardous materials and dense non-aqueous phase liquids (chlorinated solvents)
- Septic system operation (abandoned and in-use)
- Private well contamination of the local aquifer (abandoned and in-use)
- Nitrate sources
- Pharmaceuticals' and personal care products' persistence in surface and groundwater
- Hazardous material spills
- Land development effects (erosion, storm water runoff, riparian development)
- Sand & gravel mining operations

The participating water systems identified several potential actions for addressing drinking water threats. The actions below are a subset from that list and are the recommended first steps for County participation in drinking water source protection:

- 1) Integrate Drinking Water Protection into County Land Use Process
 - Develop a county-wide map (and GIS layer) showing drinking water source areas.
 - Notify public water systems of proposed development activity that falls within their source areas.
- 2) Promote Drinking Water Source Protection Education
 - With the public water systems, develop educational materials that address drinking water protection topics and raise awareness about the importance of protecting source water areas. Distribute materials to developers, residents, and others through the web site, front counter, and mailings.

-continued

-A. Drinking Water Source Protection Planning, continued:

3) Explore Feasibility of Future Drinking Water Protection Efforts

Public water systems agreed on the *need* for County involvement. The rationale:

- The concerns described above are shared by a group that is responsible for providing drinking water to approximately 75% of the County population;
- In many cases the County, not the public water system, has land use jurisdiction over water source areas, so communities are dependent on County action to protect their drinking water sources;
- Compared to the other barriers that protect public health within a public water system, drinking water source areas are most vulnerable to the threat of contamination;
- When contamination of a drinking water source occurs, the damage is already done and rehabilitation of the source can be costly;
- Working with multiple water systems, rather than a single water system, will be more efficient and establish a uniform approach to water source area protection throughout the County.

Public water systems are interested in working with the County to protect drinking water sources. They recognize that county resources are limited and are willing to contribute staff time, technical expertise, and some funding to this effort. Statements in support of this effort have been provided by a number of districts and agencies and are included as Exhibits 1-10 to this project description.

*The Following Public Water Systems attended the October 29, meeting:

- | | |
|-------------------------------------|---------------------------------------|
| ▪ City of Coburg | ▪ Mapleton Water District |
| ▪ City of Cottage Grove | ▪ Marcola Water District |
| ▪ Country View Estates Water System | ▪ McKenzie Valley Presbyterian Church |
| ▪ City of Creswell | ▪ Oregon-Cascade RV Park |
| ▪ Eugene Water and Electric Board | ▪ Rainbow Water District |
| ▪ Giustina Land & Timber | ▪ Rosboro LLC |
| ▪ Gooden's Trailer Court | ▪ Springfield Utility Board |
| ▪ Leafwood Water Association | ▪ City of Veneta |

Products/Objectives:

- Develop a Drinking Water Source Protection Area map.
- Establish procedures for staff to notify public water systems of proposed land use actions within their source areas
- Develop and distribute education materials
- Identify future actions that the county could implement to address source water protection

Project Partners:

Eugene Water and Electric Board, Springfield Utility Board

LMD Priority:	High	Coordinating Staff:	Miller
FTE Required:	0.10	Anticipated Timeline:	August – December '08

Proposed Project Title:			
B. Dredged Material Disposal Plan Update - Phase II			
Project Description and Need:			
<p>Lane County adopted the Coastal Resource Inventory (Wilsey & Ham, October 1978) and the Siuslaw River Dredged Material Disposal Plan (DMDP) (Wilsey & Ham, November 1978) as part of Lane Code Chapter 10 in 1980. Since that time new regulatory overlays including FIRM flood hazard areas, National Wetlands Inventory, Oregon Division of State Lands Goal 5 Rule for protection of wetlands, and the ESA 4d rule have become applicable on and adjacent to the inventory sites selected in 1978-1980.</p> <p>LMD received a \$30,000 technical assistance grant from the Oregon Department of Land Conservation and Development (DLCD) to develop a preliminary evaluation of the 1978 plan. LMD worked in coordination with the Port of Siuslaw, Oregon Department of Land Conservation and Development and the U.S. Army Corp of Engineers. As a result of that effort, an addendum to the official DMDP site inventory was developed and adopted by the Board of Commissioners in September of 2007.</p> <p>While the DMDP update was being conducted, the Siuslaw Watershed Council contracted with Laura Brophy – Green Point Consulting for the completion of the a report entitled the: <u>Tidal Wetland Prioritization for the Siuslaw River Estuary</u> in November 2005. The report summarized and ranked high value tidal wetlands that should be protected from dredging activities.</p> <p>After the completion of the addendum in 2007, LMD applied for a second grant with DLCD to help fund a second phase of the DMDP update. The intent of this second phase will be to integrate the Brophy analysis into the DMDP site inventory to produce a revised inventory of acceptable and allowable DMDP sites and recommend amendments to the current Dredge Plan for consideration by the co-adopters; City of Florence and Lane County and the implementing authorities; Port of Siuslaw and Army Corps of Engineers. This study would presumably result in the removal of ecologically sensitive DMDP sites and possibly, the addition of replacement sites in upland or other less sensitive areas.</p>			
Products/Objectives:			
<ul style="list-style-type: none"> ▪ Prioritize existing sites with significant Goals 5, 16 and 17 natural resources ▪ Identify existing sites that could be candidates for deactivation from the DMDP inventory ▪ Recommend upland sites as candidates to be designated as replacement sites ▪ Adopt a revised DMDP Inventory reflecting the prioritization and recommendations listed above 			
Project Partners:			
Port of Siuslaw, Army Corps of Engineers, Siuslaw Watershed Council, Oregon Department of Land Conservation and Development			
LMD Priority:	Medium	Coordinating Staff:	Miller
FTE Required:	0.40	Anticipated Timeline:	July – December 2008'

Proposed Project Title:			
C. e-Government Services Maintenance (GIS & internet)			
Project Description and Need:			
<p>Within the past two years, the Land Management Division has drastically changed way it conducts business. A major component in this positive transformation has been the increased use of internet technology as a platform for exchanging information, providing services and transacting with citizens. The LMD Planning Program has invested hundreds of staff hours and thousands of dollars developing online tools and information to assist the public.</p> <p>This work has included the creation and online publication of dozens of new forms, guidance documents, streamlined permit applications, schedules and agendas. In addition to this information, long-range staff with the assistance of the Public Works-GIS Program and Information Services, have developed several Geographic Information System (GIS) – based applications for use by both staff and the general public. To develop these tools, LMD's entire official map library was converted into a digital format. This involved the digitization and rectification of thousands of zoning and plan maps, greenway maps, coastal resource and hazard maps, special district maps and wildlife habitat, archeological and water resource inventories.</p> <p>The importance of LMD's GIS capability cannot be overstated. Staff widely acknowledges that the use of GIS has been the single largest advancement contributing to the efficiency and accuracy of their work since LMD began using personal computers.</p> <p>In December of 2007, LMD, PW-GIS and IS presented to the Board an application that enables the public to access LMD's newly developed digital maps over Internet. The tool, known as the <i>Zone & Plan Map Viewer</i>, has been steadily gaining in popularity and use by the public. At the December meeting, the Board directed staff to continue to develop the application to maintain its accuracy and functionality and to improve its interface and usability.</p> <p>For over a decade, LMD employed a full time cartographer to maintain its map library. Now that the library is digital, maintenance is simpler and maps can be amended much easier. However, upkeep of LMD's GIS capability will still require the dedication of some staff resources. In addition, other periodic updates to the LMD-Planning web pages will be required to maintain e-government services. Based on current demands, this work requires .20 FTE, minimum.</p>			
Products/Objectives:			
<ul style="list-style-type: none"> ▪ Maintain LMD's GIS functionality ▪ Expand and improve upon the <i>Zone and Plan Map Viewer</i> application ▪ Keep Planning related online resources current ▪ Develop new digital map layers as needed 			
Project Partners:			
Public Works – GIS, Information Services			
LMD Priority:	High	Coordinating Staff:	Miller
FTE Required:	0.20	Anticipated Timeline:	Ongoing

Proposed Project Title:			
D. Parks and Open Space Master Plan Update			
Project Description and Need:			
<p>In 2004, the Parks Division began an effort to update the 1981 Lane County Parks and Open Space Master Plan. An update of the 81' plan is necessary due to significant demographic shifts and changes in the demand for parks and outdoor recreational opportunities which have occurred since the plan was first adopted. In addition, a modern plan is a crucial tool which, could assist the County Parks Division work toward financial stability and provide adequate recreational facilities to meet public demand. Recreation is a key tourism component, and therefore, important to the County's economic development. Furthermore, an adequate and well planned park system provides residents a place to exercise, relax and enjoy clean air, thus promoting a healthier and happier population. For all of these reasons, an updated County Parks and Open Space Master Plan is not only prudent but a necessary ingredient in County government efforts to continue to promote a high standard of living for Lane County citizens and visitors.</p> <p>To date, a considerable amount of quality work has been completed towards the update effort: A technical advisory committee as been established, several draft chapters and appendices of the plan have been written and an extensive public involvement campaign has been undertaken. Staff in the Transportation Planning and Traffic Division (TP) have been assisting the Parks Division with the effort since 2004. Unfortunately, due to staff restructuring within TP, work on the plan has been sporadic. LMD has been asked by the Parks Superintendent and the TP Division Manager to assist in bringing the project to completion.</p> <p>The scope of LMD's assistance will likely include but not be limited to; finishing unwritten plan chapters, drafting new chapters as needed, composing findings of fact and conclusions of law and shepherding the updated plan through the post acknowledgement plan amendment process, including staffing hearings before the Planning Commission and the Board Commissioners.</p>			
Products/Objectives:			
<ul style="list-style-type: none"> ▪ Replace the outdated 1981 Lane County Parks and Open Space Master Plan; ▪ Comply with related state and local laws; ▪ Forecast and document public need and demand for recreation and open space resources; ▪ Develop corresponding goals, policies, and recommendations, consistent with the Parks Division Vision Statement; ▪ Present to the Board for adoption an updated Parks and Open Space Master Plan that will serves as both a reference and a compass for Lane County Parks Division and other public and private interests working with the Division. 			
Project Partners:			
Transportation Planning & Traffic Division, Parks Division			
LMD Priority:	High	Coordinating Staff:	Miller
FTE Required:	0.25	Anticipated Timeline:	July – November 2008'

Proposed Project Title:			
E. ODFW Coordination - Wildlife Habitat Conservation Management Program			
Project Description and Need:			
<p>Lane County participates in the Wildlife Habitat Conservation and Management Program (WHCMP). The WHCMP, administered by the Oregon Department of Fish and Wildlife (ODFW), is a cooperative effort involving state and local governments and other partners to help private landowners voluntarily conserve native wildlife habitat. The Oregon Legislature created the habitat program to offer an incentive for private landowners who want to provide wildlife habitat on their properties instead of, or in addition to, farming, growing timber or other land uses. Under the habitat program, land subject to an approved wildlife habitat conservation and management plan receives a wildlife habitat special assessment, where property taxes are assessed at the relatively low value that would apply if the land were being farmed or used for commercial forestry.</p> <p>The objective of the habitat program is to preserve, enhance or improve the composition, structure or function of habitat for native wildlife species. Prior to 2003 the habitat program was available only to rural landowners in Lane County with properties zoned for exclusive farm use forest use. House Bill 3616, in 2003, added land that is clearly identifiable as containing significant wildlife habitat. Now ODFW, in cooperation with the county, can select lands for eligibility based on zoning and/or significant native wildlife habitat.</p> <p>Participation in the program involves a minimum amount of staff time. Typically, less than ten hours per month. Work generally involves identifying or confirming the acreage, ownership and zoning requirements of identified properties. Occasionally, staff will draft maps to assist ODFW in their review of candidate properties.</p>			
Products/Objectives:			
<ul style="list-style-type: none"> ▪ Continue to coordinate with ODFW staff to review identified properties for conformance with the Wildlife Habitat Conservation Management Program standards 			
Project Partners:			
Oregon Department of Fish and Wildlife			
LMD Priority:	High	Coordinating Staff:	Miller
FTE Required:	0.5	Anticipated Timeline:	Ongoing – as requested

Proposed Project Title:			
F. Revised Riparian Protection Standards			
Project Description and Need:			
<p>Riparian protection standards found in Lane Code Chapter 16.253 regulate the clearing of vegetation along inventoried "Class 1" (fish bearing) streams and lakes. Under the current standards vegetation removal is regulated within 100' of ordinary high water (OHW) on lands zoned for resource use and within 50' of OHW on non-resource zoned land.</p> <p>LMD has been directed by Chair Stewart to place on its list of potential long-range work projects amendments to LC 12.253 that would modify current riparian protection standards to bring them more in line with the state safe harbor option for riparian setbacks outlined in the Oregon Administrative Rules. The proposed modifications would reduce the area regulated on resource zoned land from within 100' of OHW down to 75' and would increase the area regulated on non-resource land from within 50' of OHW up to 75'.</p> <p>Under the current standards, approximately 78,491 acres fall within the regulated riparian buffers around Class 1 streams and lakes. Under the proposed modified standards, approximately 61,956 acres would be regulated. The proposed amendment would constitute net reduction of 16, 535 acres of land regulated by the riparian protection standards of LC 16.253. However, the distribution of regulated land would shift impacting more area within rural residential, commercial and industrial zoned lands and fewer areas within farm and forest zoned lands.</p>			
Products/Objectives:			
<ul style="list-style-type: none"> ▪ Develop and bring to the Board for action amendments to Lane Code Chapter 16.253 that would modify streamside protection standards 			
Project Partners:			
To be determined			
LMD Priority:	Low	Coordinating Staff:	Miller
FTE Required:	0.15	Anticipated Timeline:	February - May 2009

Proposed Project Title:			
G. Community Rating System - Annual Coordination and Recertification			
Project Description and Need:			
<p>The Land Management Division, through the Planning and Building Programs, is responsible for implementing the National Flood Insurance Program (NFIP) for rural Lane County. As part of its responsibilities, LMD submitted an application to participate in the NFIP - Community Rating System (CRS) on February 29, 2008. The CRS is a voluntary, incentive based, sub-program of the NFIP that recognizes and rewards the floodplain management activities that communities undertake, which exceed the minimum NFIP requirements. Through participation in the CRS program, the flood insurance premiums for policy holders within participating communities can be lowered up to 45%, depending on strength the local flood program.</p> <p>The majority of communities that are admitted into the CRS program start off with a 5% reduction in premium rates. LMD's application is currently being reviewed and scored by FEMA. Based on our current flood program activities, LMD has received unofficial word that the County will qualify for admittance into the program and will start off with at least 5% reduction in rates and possibly, a 10% reduction.</p> <p>Once admitted into the program, the County will be required to take certain steps each year to maintain its membership. Steps typically involve submission of recertification materials demonstrating that the County is continuing to implement activities that have received credit. Communities that have chronic flood prone areas (known as repetitive loss areas) are required to carry out an annual outreach program. Lane County has several repetitive loss areas and will be required to develop and deliver tailored education materials to each area. LMD will also need to ensure that all of its day-to-day flood program procedures, forms and materials are current and consistent with NFIP standards.</p>			
Products/Outcomes:			
<ul style="list-style-type: none"> ▪ Maintain the County's membership in the Community Rating System. ▪ Ensure that the LMD flood program procedures are consistent with NFIP requirements ▪ Submit required CRS recertification documentation to FEMA ▪ Conduct required annual outreach project to repetitive loss areas 			
Project Partners:			
FEMA			
LMD Priority:	High	Coordinating Staff:	Miller
FTE Required:	0.15	Anticipated Timeline:	Ongoing

Proposed Project Title:			
H. Implementation of Flood Mitigation Strategies			
Project Description and Need:			
<p>Lane County has nearly 140,000 Acres of land in the floodplain. This is equivalent to nearly 220 square miles. Over 11,000 individual parcels are partially or entirely located within the floodplain. Statewide, Lane County has more river miles of floodplain than any other county.</p> <p>The <i>State of Oregon's Natural Hazard Mitigation Plan</i> indicates that Lane County's probability for a future flood event is high. According to the state plan, Lane County will likely face a major flood event in the next 10-35 years.</p> <p>In 2006, the Board of Commissioners adopted the <i>Lane County Natural Hazard Mitigation Plan</i>. The county's plan identifies several specific actions that can be taken which could reduce or alleviate the loss of life and property resulting from flooding. Many of the actions identified within the plan coincide closely with efforts to reduce flood insurance premiums through the Community Rating System effort (discussed in project G, above).</p> <p>Staff recommends undertaking action items identified within the <i>Lane County Natural Hazard Mitigation Plan</i> that would help reduce flood risks while simultaneously lowering citizen's flood insurance premiums. These include exploring mitigation actions for repetitive loss properties such as elevation or relocation, developing refined flood related GIS data sets such as a point file of all properties that have been issued Letters of Map Amendments (LOMA), and developing, mapping and documenting a prioritized culvert and storm water ditch maintenance program for chronic storm water related flood areas.</p>			
Products/Objectives:			
Mitigate risks from flooding and improve flood insurance discounts by:			
<ul style="list-style-type: none"> ▪ Developing needed GIS data sets: LOMA point file, storm water ditches and culverts layer ▪ Creating an inventory of areas subject to storm water flooding ▪ Exploring and developing mitigation actions for repetitive loss properties 			
Project Partners:			
Public Works, FEMA			
LMD Priority:	High	Coordinating Staff:	Miller
FTE Required:	0.30	Anticipated Timeline:	January – June 2009'

Proposed Project Title:			
I. Adoption of Dexter Public Facilities Plan			
Project Description and Need:			
<p>On June 15, 2005, the Board adopted Ordinance No. 1222. Adoption of the Ordinance was necessary to address requirements under Task 5 of the Lane County Periodic Review Work Program within the Middle Fork Willamette watershed. As a component of Work Task 5, Ordinance 1222 changed the status of the community of Dexter from a rural unincorporated community to that of an urban unincorporated community.</p> <p>Adoption of an urban unincorporated community status for Dexter placed the following obligation on the county: OAR 660-022-0050(1) "In coordination with special districts, counties shall adopt public facility plans meeting the requirements of OAR 660, Division 11, and include them in the comprehensive plan for unincorporated communities over 2,500 in population. A community public facility plan addressing sewer and water is required if the unincorporated community is designated as an urban unincorporated community under OAR 660-022-0010 and 660-022-0020. . . ."</p> <p>For the past several years, the design capacity of the Dexter Sanitary District system has been exceeded due to groundwater infiltration and inflows to the system due to leaking septic tanks and building sewers. On September 14, 2004, the Dexter Sewer District Board of Commissioners enacted Resolution No. 9-2004 imposing temporary moratoria on new sewer connections. All existing connections continue to be served. In February-March 2004, the District negotiated a Mutual Agreement and Order with the Oregon Department of Environmental Quality for a work program to correct the deficiencies in the sewer system in two phases. On February 10, 2004, the District approved a Resolution authorizing issuance of revenue bonds in the amount of \$300,000.00 to finance Phase I of the correction program.</p> <p>During Board deliberations for Ordinance No. 1222, staff recommended that coordination with the Dexter Sewer District and adoption of Dexter's public facility plan be postponed until after the completion of Phase I due to the moratorium and pending Phase I work program. At this time, Phase 1 is still not yet been complete and the moratorium is still in effect. If Phase I is completed within the first half of the 2008-2009 fiscal year staff could begin coordination with District to adopt facility plan sometime in the Spring of 2009.</p>			
Products/Objectives:			
<ul style="list-style-type: none"> ▪ Adoption of a public facility plan for the urban unincorporated community of Dexter consistent with OAR 660-022-0050(1) 			
Project Partners:			
Dexter Sanitary District			
LMD Priority:	Low	Coordinating Staff:	Miller
FTE Required:	0.15	Anticipated Timeline:	April- June 2008'

Proposed Project Title:			
J. OWEB Watershed Restoration Grants- Land Use Compatibility Review			
Project Description and Need:			
<p>The Oregon Watershed Enhancement Board (OWEB) is a state agency led by a policy oversight board. Together, they promote and fund voluntary actions that strive to enhance Oregon's watersheds. OWEB programs support Oregon's efforts to restore salmon runs, improve water quality, and strengthen ecosystems that are critical to healthy watersheds and sustainable communities. OWEB administers a grant program funded from the Oregon Lottery, federal funds and salmon license plate dollars. The grant program supports voluntary efforts by Oregonians seeking to create and maintain healthy watersheds.</p> <p>In Lane County, local watershed councils and soil and water conservation districts conduct numerous restoration projects each year. These projects are often funded wholly or in part by OWEB grants. To qualify for grant funding, applicants must demonstrate to OWEB that the proposed restoration projects do not conflict with local land use regulations. To address this requirement staff reviews grant applications for conformance with the rural comprehensive plan and advises the applicants of necessary requirements including, floodplain / floodway development permits, riparian modification requirements or greenway permits.</p>			
Products/Objectives:			
<ul style="list-style-type: none"> ▪ Continue to provide timely review and comment of restoration grants 			
Project Partners:			
Siuslaw, Long Tom, Middle Fork Willamette and McKenzie Watershed Councils, East Lane Soil and Water Conservation District and Siuslaw Soil and Water Conservation District			
LMD Priority:	High	Coordinating Staff:	Miller
FTE Required:	0.5	Anticipated Timeline:	Ongoing – as requested

Proposed Project Title:			
K. Coordination – Community Wildfire Protection Plan			
Project Description and Need:			
<p>On July 12, 2005 the Lane County Board of Commissioners signed Order No 05-7-12-1, adopting the Lane County Community Wildfire Protection Plan.</p> <p>A Community Wildfire Protection Plan (CWPP) is a collaborative, community-based forest planning and prioritization tool. CWPPs are developed by communities at risk from wildfire to help clarify and refine priorities for the protection of life, property, and critical infrastructure.</p> <p>The Lane County CWPP has three primary goals:</p> <ol style="list-style-type: none"> 1. Provide countywide leadership through partnerships to implement wildland urban interface fire mitigation strategies in Lane County. 2. Improve community strategies for reducing the impacts of wildland-urban interface fires. 3. Promote wildfire risk reduction activities for private and public lands in Lane County. <p>In the three years since the CWPP was adopted, substantial progress has been made. Coordinated efforts by partner agencies have helped to refine the understanding of wildfire risks within the county and to convey these risks to citizens. Rural land owners are now more informed of the threats posed by wildfire and are more aware of their shared responsibility in reducing these threats. Staff from the Oregon Department of Forestry (ODF), United States Forest Service (USFS), the Bureau of Land Management (BLM), the State Fire Marshals Office, Lane County Land Management, Lane County Emergency Management and several rural fire protections districts have successfully collaborated on a number of mitigation activities around the county. These agencies have also pursued new funding opportunities to help promote collaborative wildfire mitigation activities in the coming years.</p> <p>To support the CWPP effort Land Management's function has been twofold. First, staff have solicited Title II and Title III funding from Resource Advisory Committees (RACs) and the Board of Commissioners and facilitated the distribution of these funds. Second, LMD has helped develop and distribute wildfire education materials.</p>			
Products/Objectives:			
<p>Continue to:</p> <ul style="list-style-type: none"> ▪ Pursue Title II and Title III funding (if available) ▪ Distribute wildfire education materials to builders, developers and homeowners and maintain the CWPP website 			
Project Partners:			
Lane County Fire Defense Board, State Fire Marshal , Oregon Department of Forestry			
LMD Priority:	Medium	Coordinating Staff:	Miller
FTE Required:	0.05	Anticipated Timeline:	December - March 2009

Proposed Project Title:			
L. Eugene Springfield Metro Planning Coordination			
Project Description and Need:			
<p>Under State law, Lane County is partner to the decisions pertaining to any expansion of urban growth boundaries (UGB) or plan amendments within the Metro Plan Boundaries or UGBs of Eugene and Springfield and the ten small incorporated cities in Lane County. The Metro Plan decision process is coordinated among three jurisdictions, Lane County, the City of Eugene and the City of Springfield. The adoption of amendments to the Metro Plan text and diagram requires simultaneous coordinated decisions that include public involvement through notice and public hearings between Lane County and one or both of the cities for actions and amendments to move forward.</p> <p>Projects upcoming in 2008 in this category include the Permanent Replacement I-5 Bridge over the Willamette River (3 jurisdiction decision), Springfield Stormwater System Plan amendments to the Metro Plan Public Facilities and Services Plan (PFSP), a program specific refinement plan to the Metro Plan (2 jurisdiction decision), and final decision on the Delta Sand and Gravel Post Acknowledgement Plan Amendment (2 jurisdiction decision).</p>			
Products/Objectives:			
<ul style="list-style-type: none"> ▪ Coordinate Metro planning projects described above 			
Project Partners:			
Cities of Eugene and Springfield			
LMD Priority:	High	Coordinating Staff:	Schulz
FTE Required:	.30	Anticipated Timeline:	Ongoing

Attachment C

Proposed Project Title:			
M. Regional Water Resources Planning			
Project Description and Need:			
<p>LMD participates in a number of ongoing regional water resource planning activities. Staff serve on regional study groups and committees such as the Southern Willamette Valley Group study of groundwater issues in the Coburg area; Metro Waterways multi-jurisdictional study of floodplain and riverine habitat issues under federal jurisdiction through the Army Corps of Engineers in the metro area and tributaries of the Willamette–McKenzie Rivers; and the implementation of the Total Maximum Daily Load study. Continuation of these activities will require LMD staff participation in FY 2008-2009 including monthly participation in meetings for the Metro Waterways Study, and the 'upriver' Willamette Restoration Initiative ACOE projects. In addition to these ongoing projects, staff has also been asked to analyze possible policy options to address surface water runoff issues. This task would logically fall within this category of work.</p>			
Products/Objectives:			
<ul style="list-style-type: none"> ▪ Coordinate regional water resource planning as described above 			
Project Partners:			
Cities of Eugene and Springfield, ACOE			
LMD Priority:	High	Coordinating Staff:	Schulz
FTE Required:	.20	Anticipated Timeline:	Ongoing

Proposed Project Title:			
N. Special District Boundary Changes			
Project Description and Need:			
<p>The dissolution of the Boundary Commission by the state legislature required Lane County Land Management to work with other affected county departments (Annexation & Taxation and Elections, primarily) to develop processes, fees, and staffing for annexations, formations, dissolutions, and other changes to Special Districts identified and organized under ORS 198. In addition, all cities throughout the county must adopt processes for annexations, etc. to their own territory under ORS 222. In some cases, both city and county have a role in the interface area of special service districts that overlap with cities, such as Springfield Utility Board, Eugene Water & Electric Board, Willamalane, and the Metropolitan Waste Management Board. This project will require the ongoing review and processing of applications for changes throughout the county.</p>			
Products/Objectives:			
<ul style="list-style-type: none"> ▪ Coordinate special district boundary changes as described above 			
Project Partners:			
A&T and Elections			
LMD Priority:	High	Coordinating Staff:	Schulz
FTE Required:	.15	Anticipated Timeline:	Ongoing

Proposed Project Title:			
O. Small City Coordination			
Project Description and Need:			
<p>Land Management Division is required under state land use law to coordinate co-adoption of land use projects and proposals that affect the land and policies that apply within the Urban Growth Boundaries of any city. The ten small cities in the county are Dunes City, Florence, Veneta, Junction City, Coburg, Creswell, Cottage Grove, Lowell, Westfir and Oakridge. Several of these cities contract with LCOG for planning services, so coordination for city/county co-adoption can involve LCOG staff as well. Projects include UGB expansions, with and without rezoning of the subject property, amendments to refinement plans such as Transportation System and Coastal Resource Plans and text amendments to Lane Code Chapter 10.</p>			
Products/Objectives:			
<ul style="list-style-type: none"> ▪ Coordinate co-adoption of small city land use projects as needed. 			
Project Partners:			
Small Cities, LCOG			
LMD Priority:	High	Coordinating Staff:	Schulz
FTE Required:	.35	Anticipated Timeline:	Ongoing

Proposed Project Title:			
P. Lane Code Updates from the 2007 and 2008 Land Use Legislation			
Project Description and Need:			
<p>After each legislative session, the Land Management Division revises Lane Code Chapters 10, 13, 14 and 16 to comply with any changes made to the Oregon Revised Statutes (ORS) and the Oregon Administrative Rules (OAR).</p> <p>HB 2723 (2007) enacted standards and procedures for validating units of land that were created by a sale (i.e., the recording of a deed or land sales contract) if the unit of land could have complied with applicable land use regulations at the time it was sold or if the local government subsequently approved a dwelling on the property.</p> <p>HB 3629 (2008) was drafted in response to the Court of Appeals decision in <i>Phillips v. Polk County</i>. The bill authorizes counties to approve property line adjustments that result in the creation of substandard lots or parcels in specified circumstances.</p> <p>LMD is currently working on amendments to Lane Code to address Oregon Legislative Assembly revisions to the ORS in 2007. These proposed amendments have been reviewed by the Planning Commission and will be presented to the Board within the next two to three months. Not included in the 2007 updates are any changes to address HB 2723. Initial staff consensus was that this Bill could be addressed administratively without any amendments to Lane Code. This may not be the case. In addition, it appears that Lane Code Chapter 13 will be required to address HB 3629.</p>			
Products/Objectives:			
<p>To address these new pieces of legislation staff propose to:</p> <ul style="list-style-type: none"> ▪ Develop new provisions in Lane Code Chapter 13 to implement and comply with HB 3629 (property line adjustments). ▪ Analyze what amendments to Lane Code Chapter 13 might be required to comply with HB 2723 (retroactive validation of units of land). ▪ Conduct housekeeping and conforming amendments to Lane Code Chapter 13 definitions for consistency with ORS 92.010, HB 3629, and, potentially, HB 2723. 			
Project Partners:			
N/A			
LMD Priority:	High	Coordinating Staff:	Miller/Schulz
FTE Required:	.15	Anticipated Timeline:	Ongoing

Proposed Project Title:			
Q. Coordinated Population Projections			
Project Description and Need:			
<p>On February 13, 2008, the Board adopted Order No. 08-2-13-2 in the Matter of Rescinding Delegation to Lane Council of Governments Regarding Population Forecasting.</p> <p>In a June 18, 2008, cover memo to the BCC Matt Laird, LMD Manager, presented five possible options to address population forecast requirements. All of the potential options would require some level of action from the Long-Range Planning program. Some of the options would impact staff more that others and it is estimated that up to 1.0 FTE may be required to conduct this work.</p>			
Products/Objectives:			
<p>Develop and propose for adoption coordinated forecasts that are:</p> <ol style="list-style-type: none"> 1. Responsive to the planning needs of the Lane County and its incorporated cities 2. Developed using commonly accepted standards and practices in the field of demography 3. Based upon current, reliable and objective sources of verifiable information such as:: birth and death rates, immigration and emigration rates, building permits, land use patterns and census data 4. Conducted in an open and transparent manner with opportunity for public review and comment 5. Legally defensible 			
Project Partners:			
PW-GIS, DLCD, PSU			
LMD Priority:	High	Coordinating Staff:	Miller/Schulz
FTE Required:	Up to 1.0 FTE	Anticipated Timeline:	Sept 2008 - June 2009

Proposed Project Title:			
R. Policy review of HO Decision regarding replacement dwellings			
Project Description and Need:			
<p>On January 14, 2008, (initial decision) and January 29, 2008, (reconsideration) the Lane County Hearings Official issued decisions reversing the Planning Director's approval of a replacement dwelling in the EFU zone (tax lot 608 of map 18-05-08) (File No. PA 07-5572/Bottem/CBM Family LLC). A justification for the reversal is outlined in the Hearings Official's decision, included as "Exhibit 11" to this attachment.</p> <p>These decisions will likely result in the removal of a 1979 Oakbrook mobile home from the property, which has been occupied on site since 1980. It should be noted that the mobile home was placed without benefit of building permits. However, at the time that the mobile home was placed, the property was zoned (FF-20) Farm-Forestry District, 20 acre minimum lot size, and would have allowed a dwelling to be placed.</p> <p>The Hearings Official decision was appealed to the Board of Commissioners and on March 19, 2008, the Board chose not to conduct an on the record appeal hearing as recommended by the Planning Director.</p> <p>Land Management is recommending that the Board of Commissioners direct staff to process amendments to the General Provisions section of Lane Code Chapter 10 cited as justification for Hearings Official's decision.</p>			
Products/Objectives:			
<ul style="list-style-type: none"> ▪ Modify the General Provisions section of Lane Code Chapter 10 Lane Code to eliminate or modify language referring to building permits 			
Project Partners:			
N/A			
LMD Priority:	Low	Coordinating Staff:	Miller
FTE Required:	.05	Anticipated Timeline:	May-June 2008

Proposed Project Title:			
S. Concurrent processing of building permits & final land use decisions			
Project Description and Need:			
<p>Residents seeking to develop and build property in Lane County must obtain necessary land use approvals, on site sanitation permits and building permits. Current procedures and practices dictate that land use approvals must be obtained before applicants apply for building permits. This chronology is generally appropriate because land use regulations often impact the siting standards and even the specific design requirements of structures. In the majority of cases, land use approval can be obtained the same day that building permits are applied for if no special use permits are required.</p> <p>Commissioner Fleenor requested that LMD investigate possible strategies that could enable both building and planning permits to be processed concurrently when a special use permit is required.</p>			
Products/Objectives:			
<ul style="list-style-type: none"> ▪ Investigate and develop possible strategies to process building and land use approvals concurrently 			
Project Partners:			
LMD Building Program			
LMD Priority:	Low	Coordinating Staff:	Miller
FTE Required:	.05	Anticipated Timeline:	March 2009

Proposed Project Title:			
T. Measure 49 Referrals			
Project Description and Need:			
<p>In November 2007, voters approved Measure 49, which modified Measure 37. The Oregon Department of Land Conservation and Development (DLCD) is authorized under M49 to evaluate existing M37 claims.</p> <p>DLCD is currently in the process of mailing option election packets to valid M37 claimants. Claimants will need to indicate which of the options under M49 that they will pursue. Claimants will also be required to undergo a "supplemental review" to ensure that their chosen option is possible under M49. As part of that supplemental review process Lane County will need to provide research assistance to DLCD regarding historical zone designations and development criteria. LMD has been working with DLCD to establish a library of historical County ordinances. It is anticipated that this work will continue and increase as the 300+ valid M37 claimants in Lane county begin to work through the machinations of M49 at the state level. In addition to identifying historical zone designations and development criteria, DLCD will also need assistance obtaining accurate notice lists of surrounding properties as well as Assessor's information.</p>			
Products/Objectives:			
<ul style="list-style-type: none"> ▪ Provide historical zoning ordinance research to DLCD as needed ▪ Provide Assessor's card and information concerning contiguous ownership ▪ Provide buffered mailing lists for notice purposes 			
Project Partners:			
DLCD - M49 Program			
LMD Priority:	High	Coordinating Staff:	Howe/Miller
FTE Required:	.20	Anticipated Timeline:	Ongoing – as requested

Attachment "D" Scenario 1

Project Name	Required FTE	Staff Priority Ranking	Commis Comm. Fleenor
L. Eugene Springfield Metro Plan	0.30	High	2
N. Special District Boundary Changes	0.15	High	3
O. Small City Coordination	0.35	High	4
P. Lane Code Updates from 2008 Land Use Legislation	0.15	High	5
Q. Coordinated Population Projections (Option 3)	0.50	High	1
A. Drinking Water Source Protection Planning	0.10	High	7
D. Parks Master Plan Adoption	0.25	High	10
C. e-Government Services Maintenance (GIS & internet)	0.20	High	8
U. Review of the Appeals process and fees	0.05	High	6
G. Community Rating System - Annual Coordination and Recertification	0.15	High	13
H. County Flood Mitigation Plan Phase 1	0.30	High	11
V. Streamlining permitting for solar and other alternative energy sources	0.10	High	22
S. Concurrent processing of building permits & final land use decisions	0.05	Low	14
M. Regional Water Resources Planning	0.25	Medium	15
J. OWEB Grant Projects - Land Use Compatibility Review	0.05	High	12
T. Measure 49 Referrals	0.20	High	9
B. Dredged Material Disposal Plan Update - Phase II	0.40	Low	16
R. Policy review of HO Decision regarding replacement dwellings	0.05	Medium	17
F. Revised Riparian Protection Provisions	0.15	Low	18
E. ODFW Coordination Wildlife Habitat Conservation Program	0.05	Medium	20
I. Adoption of Dexter Public Facilities Plan	0.15	Low	21
K. Grant Writing & Coordination - Community Wildfire Protection Plan	0.05	Medium	19
W. Metro Plan Urban Transition Termination	1.50	Medium	-
X. Metro Plan Fundamental Policy Amendments	1.00	Medium	-

Total FTE Required to undertake Prioritized Projects: 2.35

Projects prioritized for action in the 2008-2009 FY

Projects not prioritized for action

Donors' Responses		Sum: Response Results				Group- Based Ranking
Comm. Green	Comm. Stewart		Mean	Median	Mode	
1	3	6	2.00	2	N/A	1
2	4	9	3.00	3	N/A	2
5	2	11	3.67	4	N/A	3
3	5	13	4.33	5	5	4
14	1	16	5.33	1	1	5
6	6	19	6.33	6	6	6
7	7	24	8.00	7	7	7
8	8	24	8.00	8	8	8
4	18	28	9.33	6	N/A	9
12	12	37	12.33	12	12	10
17	9	37	12.33	11	N/A	11
9	10	41	13.67	10	N/A	12
10	17	41	13.67	14	N/A	13
11	15	41	13.67	15	15	14
20	11	43	14.33	12	N/A	15
22	13	44	14.67	13	N/A	16
15	14	45	15.00	15	N/A	17
13	16	46	15.33	16	N/A	18
18	19	55	18.33	18	18	19
16	22	58	19.33	20	N/A	20
19	20	60	20.00	20	N/A	21
21	21	61	20.33	21	21	22
-	-	-	-	-	-	-
-	-	-	-	-	-	-

Attachment "D" Scenario 2

Project Name	Required FTE	Staff Priority Ranking	Comm Fleno
L. Eugene Springfield Metro Plan	0.30	High	2
N. Special District Boundary Changes	0.15	High	3
O. Small City Coordination	0.35	High	4
P. Lane Code Updates from 2008 Land Use Legislation	0.15	High	5
Q. Coordinated Population Projections (Option 4)	1.00	High	1
A. Drinking Water Source Protection Planning	0.10	High	7
D. Parks Master Plan Adoption	0.25	High	10
C. e-Government Services Maintenance (GIS & internet)	0.20	High	8
U. Review of the Appeals process and fees	0.05	High	6
G. Community Rating System - Annual Coordination and Recertification	0.15	High	13
H. County Flood Mitigation Plan Phase 1	0.30	High	11
V. Streamlining permitting for solar and other alternative energy sources	0.10	High	22
S. Concurrent processing of building permits & final land use decisions	0.05	Low	14
M. Regional Water Resources Planning	0.25	Medium	15
J. OWEB Grant Projects - Land Use Compatibility Review	0.05	High	12
T. Measure 49 Referrals	0.20	High	9
B. Dredged Material Disposal Plan Update - Phase II	0.40	Low	16
R. Policy review of HO Decision regarding replacement dwellings	0.05	Medium	17
F. Revised Riparian Protection Provisions	0.15	Low	18
E. ODFW Coordination Wildlife Habitat Conservation Program	0.05	Medium	20
I. Adoption of Dexter Public Facilities Plan	0.15	Low	21
K. Grant Writing & Coordination - Community Wildfire Protection Plan	0.05	Medium	19
W. Metro Plan Urban Transition Termination	1.50	Medium	-
X. Metro Plan Fundamental Policy Amendments	1.00	Medium	-

Total FTE Required to undertake Prioritized Projects: 2.30

Projects prioritized for action in the 2008-2009 FY

Projects not prioritized for action

Donors' Responses		Sum: Response Results	Sum:			Group- Based Ranking
Comm. Green	Comm. Stewart		Mean	Median	Mode	
1	3	6	2.00	2	N/A	1
2	4	9	3.00	3	N/A	2
5	2	11	3.67	4	N/A	3
3	5	13	4.33	5	5	4
14	1	16	5.33	1	1	5
6	6	19	6.33	6	6	6
7	7	24	8.00	7	7	7
8	8	24	8.00	8	8	8
4	18	28	9.33	6	N/A	9
12	12	37	12.33	12	12	10
17	9	37	12.33	11	N/A	11
9	10	41	13.67	10	N/A	12
10	17	41	13.67	14	N/A	13
11	15	41	13.67	15	15	14
20	11	43	14.33	12	N/A	15
22	13	44	14.67	13	N/A	16
15	14	45	15.00	15	N/A	17
13	16	46	15.33	16	N/A	18
18	19	55	18.33	18	18	19
16	22	58	19.33	20	N/A	20
19	20	60	20.00	20	N/A	21
21	21	61	20.33	21	21	22
-	-	-	-	-	-	-
-	-	-	-	-	-	-

Attachment "D" Scenario 3

Project Name	Required FTE	Staff Priority Ranking	Comm. Fleanor
L. Eugene Springfield Metro Plan	0.30	High	2
N. Special District Boundary Changes	0.15	High	3
O. Small City Coordination	0.35	High	4
P. Lane Code Updates from 2008 Land Use Legislation	0.15	High	5
Q. Coordinated Population Projections (Option 3 or 4)	0.5 - 1.0	High	1
A. Drinking Water Source Protection Planning	0.10	High	7
D. Parks Master Plan Adoption	0.25	High	10
C. e-Government Services Maintenance (GIS & internet)	0.20	High	8
U. Review of the Appeals process and fees	0.05	High	6
G. Community Rating System - Annual Coordination and Recertification	0.15	High	13
H. County Flood Mitigation Plan Phase 1	0.30	High	11
V. Streamlining permitting for solar and other alternative energy sources	0.10	High	22
S. Concurrent processing of building permits & final land use decisions	0.05	Low	14
M. Regional Water Resources Planning	0.25	Medium	15
J. OWEB Grant Projects - Land Use Compatibility Review	0.05	High	12
T. Measure 49 Referrals	0.20	High	9
B. Dredged Material Disposal Plan Update - Phase II	0.40	Low	16
R. Policy review of HO Decision regarding replacement dwellings	0.05	Medium	17
F. Revised Riparian Protection Provisions	0.15	Low	18
E. ODFW Coordination Wildlife Habitat Conservation Program	0.05	Medium	20
I. Adoption of Dexter Public Facilities Plan	0.15	Low	21
K. Grant Writing & Coordination - Community Wildfire Protection Plan	0.05	Medium	19
W. Metro Plan Urban Transition Termination	1.50	Medium	-
X. Metro Plan Fundamental Policy Amendments	1.00	Medium	-
Total FTE Required to undertake Prioritized Projects:	2.50		

Projects prioritized for action in the 2008-2009 FY

Projects not prioritized for action in the 2008-2009 FY

Commissioners' Responses		Sum: Response Results	Sum:			Group- Based Ranking
Comm. Green	Comm. Stewart		Mean	Median	Mode	
1	3	6	2.00	2	N/A	1
2	4	9	3.00	3	N/A	2
5	2	11	3.67	4	N/A	3
3	5	13	4.33	5	5	4
14	1	16	5.33	1	1	5
6	6	19	6.33	6	6	6
7	7	24	8.00	7	7	7
8	8	24	8.00	8	8	8
4	18	28	9.33	6	N/A	9
12	12	37	12.33	12	12	10
17	9	37	12.33	11	N/A	11
9	10	41	13.67	10	N/A	12
10	17	41	13.67	14	N/A	13
11	15	41	13.67	15	15	14
20	11	43	14.33	12	N/A	15
22	13	44	14.67	13	N/A	16
15	14	45	15.00	15	N/A	17
13	16	46	15.33	16	N/A	18
18	19	55	18.33	18	18	19
16	22	58	19.33	20	N/A	20
19	20	60	20.00	20	N/A	21
21	21	61	20.33	21	21	22
-	-	-	-	-	-	-
-	-	-	-	-	-	-

Attachment "D" Scenario 4

Project Name	Required FTE	Staff Priority Ranking	Commis Comm. Fleenor
L. Eugene Springfield Metro Plan	0.30	High	2
N. Special District Boundary Changes	0.15	High	3
O. Small City Coordination	0.35	High	4
P. Lane Code Updates from 2008 Land Use Legislation	0.15	High	5
Q. Coordinated Population Projections (Option 3 or 4)	0.50	High	1
A. Drinking Water Source Protection Planning	0.10	High	7
D. Parks Master Plan Adoption	0.25	High	10
C. e-Government Services Maintenance (GIS & internet)	0.20	High	8
U. Review of the Appeals process and fees	0.05	High	6
G. Community Rating System - Annual Coordination and Recertification	0.15	High	13
H. County Flood Mitigation Plan Phase 1	0.30	High	11
V. Streamlining permitting for solar and other alternative energy sources	0.10	High	22
S. Concurrent processing of building permits & final land use decisions	0.05	Low	14
M. Regional Water Resources Planning	0.25	Medium	15
J. OWEB Grant Projects - Land Use Compatibility Review	0.05	High	12
T. Measure 49 Referrals	0.20	High	9
B. Dredged Material Disposal Plan Update - Phase II	0.40	Low	16
R. Policy review of HO Decision regarding replacement dwellings	0.05	Medium	17
F. Revised Riparian Protection Provisions	0.15	Low	18
E. ODFW Coordination Wildlife Habitat Conservation Program	0.05	Medium	20
I. Adoption of Dexter Public Facilities Plan	0.15	Low	21
K. Grant Writing & Coordination - Community Wildfire Protection Plan	0.05	Medium	19
W. Metro Plan Urban Transition Termination	1.50	Medium	-
X. Metro Plan Fundamental Policy Amendments	1.00	Medium	-

Total FTE Required to undertake Prioritized Projects:

2.45

Projects prioritized for action in the 2008-2009 FY

Projects not prioritized for action in

Commissioners' Responses		Sum: Response Results				Group- Based Ranking
Comm. Green	Comm. Stewart		Mean	Median	Mode	
1	3	6	2.00	2	N/A	1
2	4	9	3.00	3	N/A	2
5	2	11	3.67	4	N/A	3
3	5	13	4.33	5	5	4
14	1	16	5.33	1	1	5
6	6	19	6.33	6	6	6
7	7	24	8.00	7	7	7
8	8	24	8.00	8	8	8
4	18	28	9.33	6	N/A	9
12	12	37	12.33	12	12	10
17	9	37	12.33	11	N/A	11
9	10	41	13.67	10	N/A	12
10	17	41	13.67	14	N/A	13
11	15	41	13.67	15	15	14
20	11	43	14.33	12	N/A	15
22	13	44	14.67	13	N/A	16
15	14	45	15.00	15	N/A	17
13	16	46	15.33	16	N/A	18
18	19	55	18.33	18	18	19
16	22	58	19.33	20	N/A	20
19	20	60	20.00	20	N/A	21
21	21	61	20.33	21	21	22
-	-	-	-	-	-	-
-	-	-	-	-	-	-